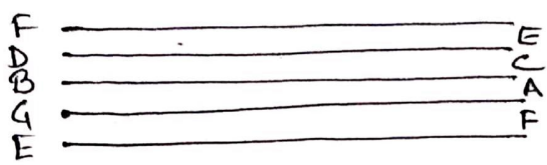


The Staff

Music is written on a STAFF which consists of 5 horizontal parallel lines and 4 gaps in it. Music is read from left to right like books we read. The lines and gaps tell you which NOTE you have to play. It tells you the OCTAVE, like how low or high notes you have to play.

NOTES ON THE STAFF

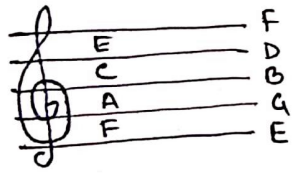


The notes on the lines are
E - G - B - D - F

The notes on the gaps are
F - A - C - E

CLEFF

There is a sign in the very beginning on the staff. This is called the CLEFF. The CLEFF represents which note will stay on the line and gaps. As we play guitar we will stay on the TREBLE CLEFF. The notes in the TREBLE CLEFF is as same as mentioned above.



THE TREBLE CLEFF

Rythm

There are four main types of notes that vary according to how long they are played.

WHOLE NOTE

COUNT 4

WHOLE REST

COUNT 4

HALF NOTE

COUNT 2

HALF REST

COUNT 2

QUARTER NOTE

COUNT 1

QUARTER REST

COUNT 1

EIGHTH NOTE

COUNT 1/2

EIGHTH REST

COUNT 1/2